

JV Venture of  
**AVENUE & FORTUNE**

**URBANIA**  
Nex Gen Livin' Experience

**3 & 4 BHK URBAN LIVING**

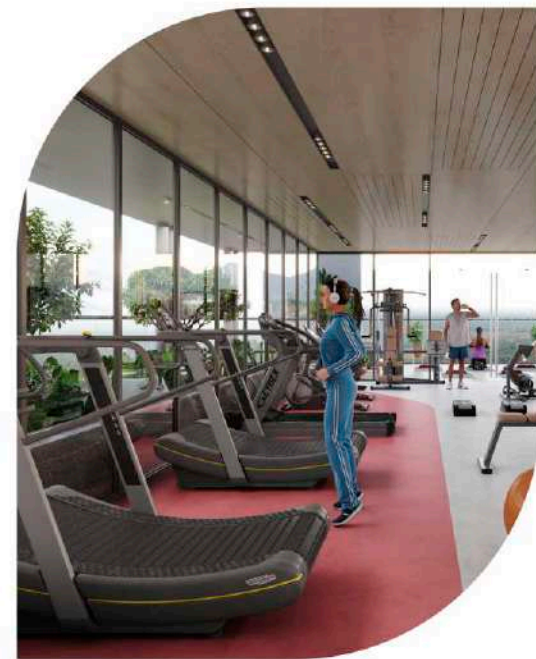
# URBANIA

NEX GEN LIVIN' EXPERIENCE

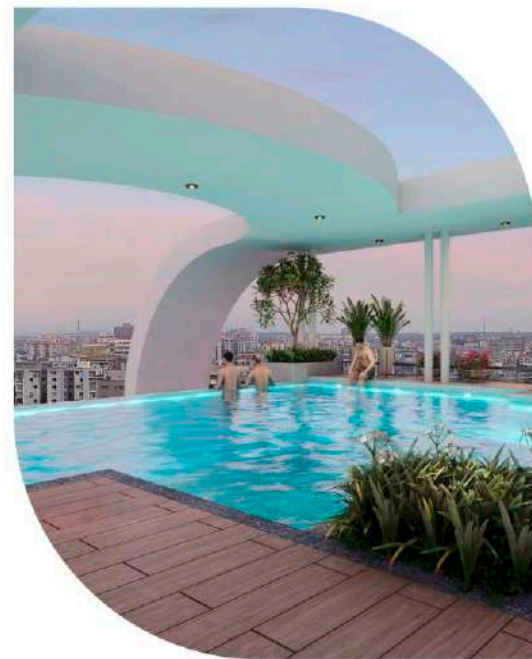
TIER I - RESIDENCES



TIER II - GROUND



TIER III - RECREATIONAL



TIER IV - TERRACE



# FOUR TIERS

OF CELEBRITYLIKE LIFESTYLE



## TIER I - RESIDENCES (LIVING)

- 3 & 4 BHK sky lifestyle with world-class embellishments
- 72 luxurious residences
- Per floor 2 apartment
- 2 sky-scaling towers of 20 storeys
- Around 10'6" floor height

## TIER II - GROUND (KIDS & COMMUNITY LIVING)

- Designer landscaped garden
- Outdoor children park with rubberised flooring
- Senior citizens park with aroma therapy garden
- Grand entrance foyer

## TIER III - RECREATIONAL (SOCIAL, SPORTS)

- Indoor gym
- Jogging track
- Seating arrangement
- Multi purpose hall
- Indoor game
- Outdoor game

## TIER IV - TERRACE (INDULGE, RELAX)

- Spectacular infinity swimming pool for adults & kid's
- Spacious yoga aerobics lawn
- Community garden
- Open air theatre



# HIGHER LIVING

**URBANIA**  
NEX GEN LIVIN' EXPERIENCE



## Project Features

2 sky-scaling towers of 20 storeys

3 & 4 BHK sky lifestyle with world-class embellishments

10'6" floor top to floor top height

Large lush green landscape area

High speed luxurious elevators

Car parking on ground floor & podium

Grate community & 24x7 CCTV surveillance

Fortune Urbania **3 & 4 BHK** residences are created for those who never compromise.

You can call it a revolution in high-end living and it's going to take your 'joy of living' quotient to a new height. Here is your truly a once in a lifestyle opportunity to own a home that has all the ingredients for a perfect life.





**URBANIA**  
NEX GEN LIVIN' EXPERIENCE

**AN ELITE  
ABODE THAT  
REFLECTS  
THE BEST  
OF YOU**

ENTRANCE GATE



SECURITY CABIN



PARKING

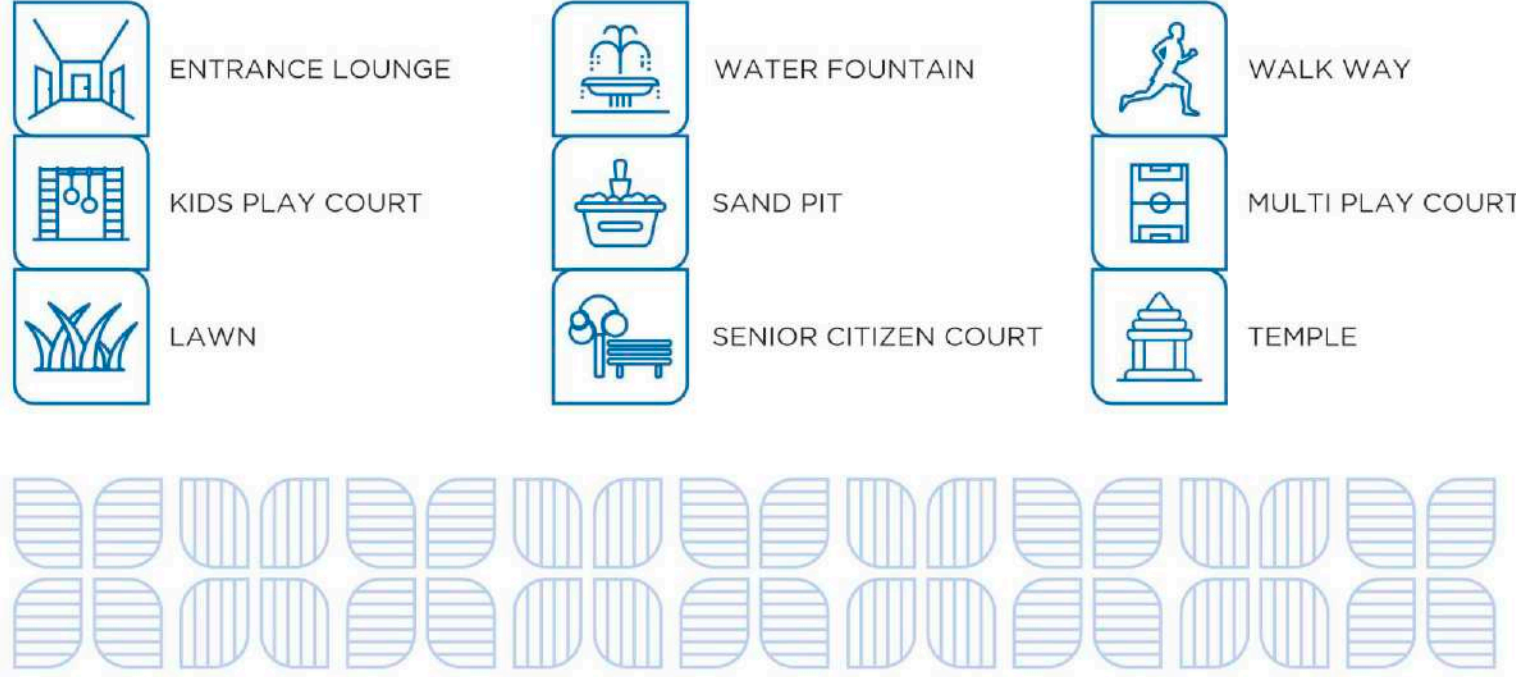


Each residence is an archetype of impeccable craftsmanship, refined luxury and sensational lifestyle.



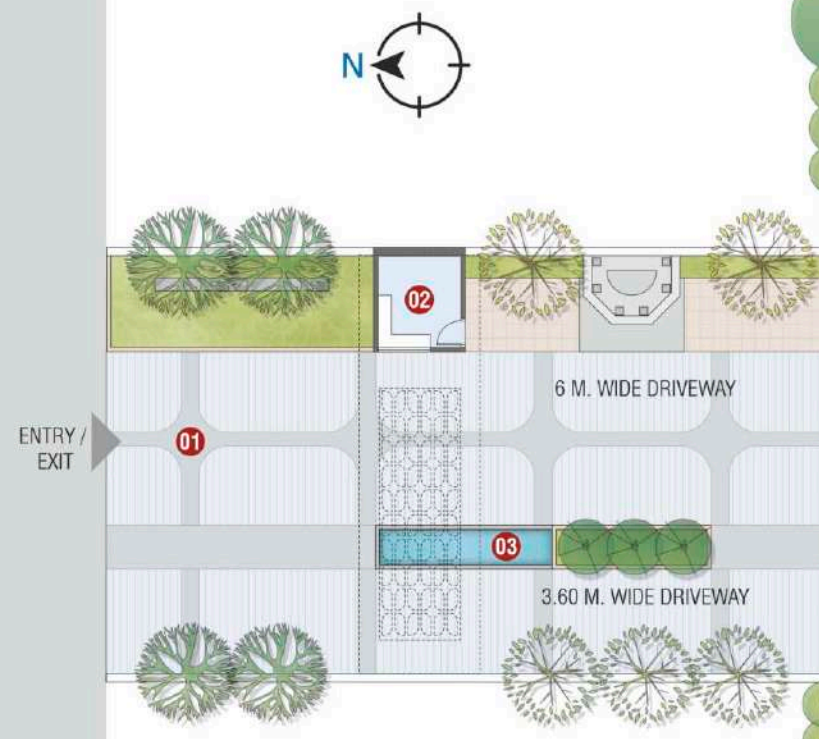
# FEEL THE BLISS ENVELOPE YOU IN A WARM HUG

A peaceful temple, beautiful garden and exciting sports amenities to fulfil the diverse needs of everyone in your family.



# GROUND | FLOOR PLAN

12 M. WIDE ROAD



- LEGEND**
- |                    |                         |
|--------------------|-------------------------|
| 01 ENTRANCE GATE   | 09 MULTI PLAY COURT     |
| 02 SECURITY CABIN  | 10 LAWN                 |
| 03 WATER FOUNTAIN  | 11 SENIOR CITIZEN COURT |
| 04 ENTRANCE LOUNGE | 12 TEMPLE               |
| 05 ROOM            | 13 WALK WAY             |
| 06 TOILET          | 14 RAMP                 |
| 07 KIDS PLAY COURT | 15 PARKING              |
| 08 SAND PIT        |                         |

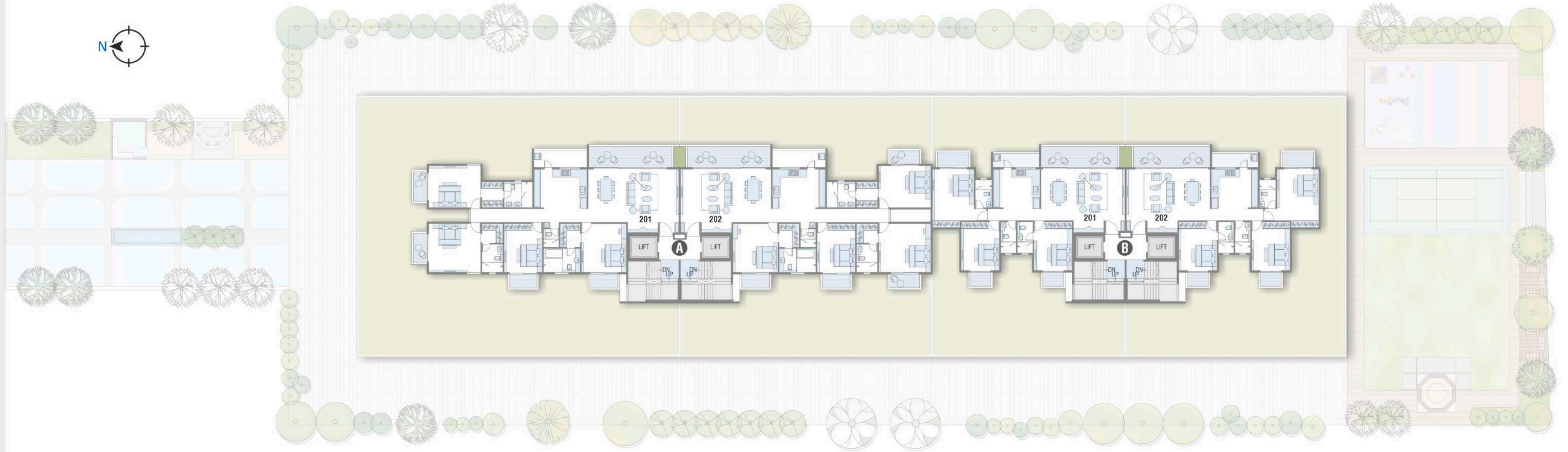


# PODIUM | FLOOR PLAN



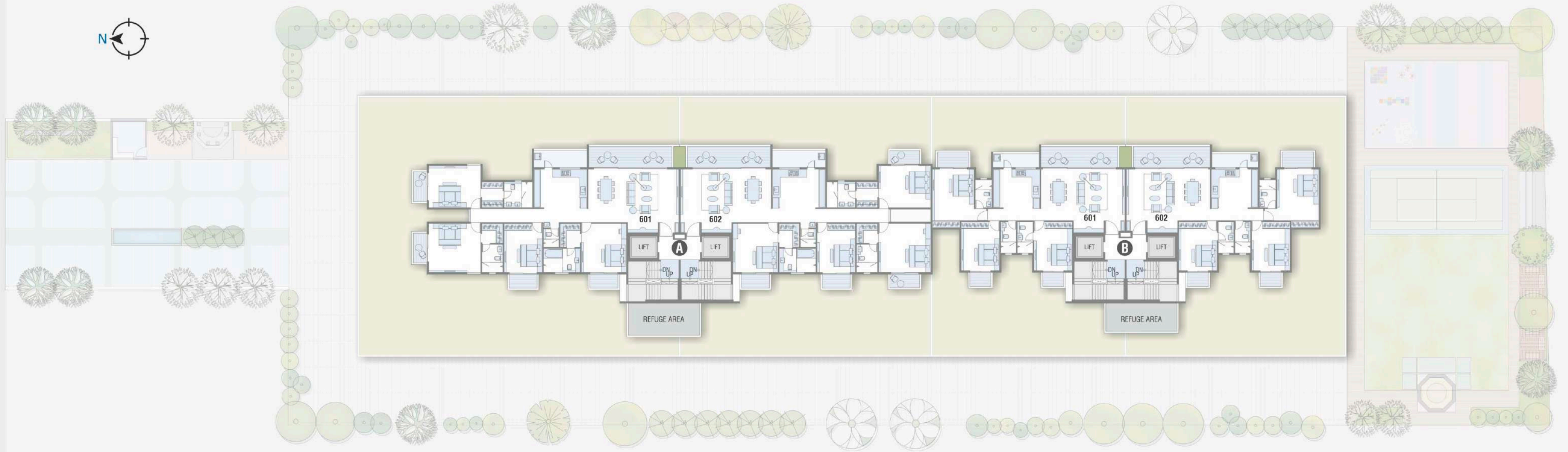
2nd To 5th, 7th To 10th,  
12th To 15th, 17th & 18th

**TYPICAL** | FLOOR PLAN



6th, 11th & 16th

**TYPICAL** | FLOOR PLAN





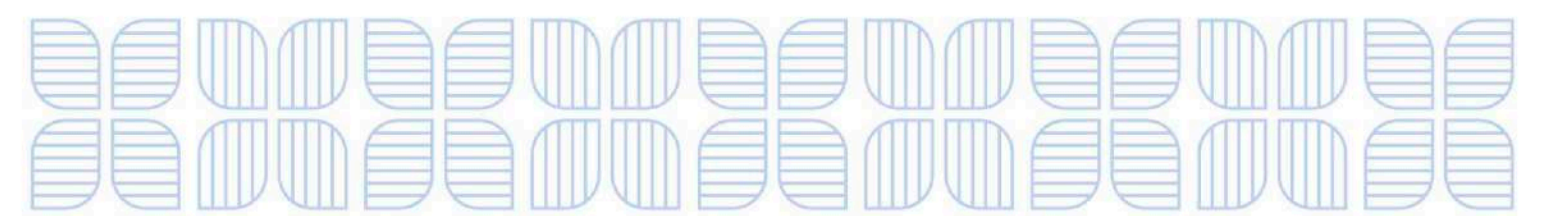




WALK ON  
THE GREEN CARPET

LAI ACROSS  
THE SKY

You get to enjoy the best of both the worlds when you can relish the serenity of lush greenery and views of stunning skyline at the same time. It is such a rare, delightful sight to behold.



# THE DELIGHTS OF REJUVENATION CALLING TO YOU

A plethora of the most amazing lifestyle amenities right at your doorstep brings you closer to the world of utmost relaxation, entertainment and rejuvenation.



JOGGING TRACK



HAMMOCK SEATING



MULTIPURPOSE HALL



OXYGEN PARK



YOGA DECK



INDOOR GAMES



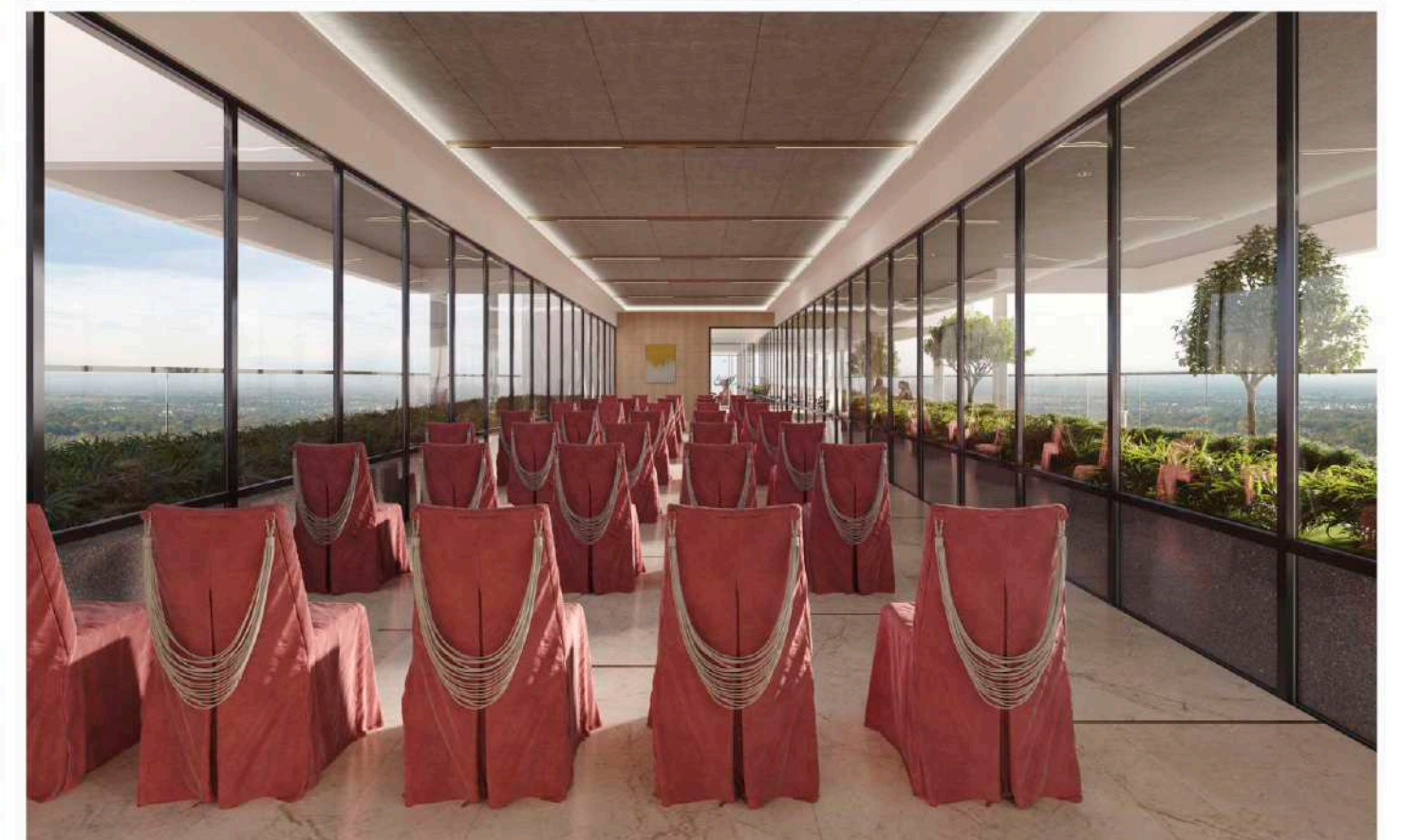
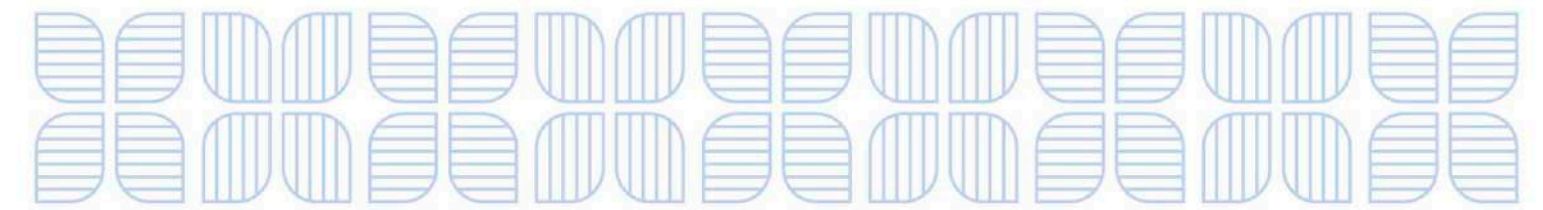
SEATING



INDOOR GYM



OUTDOOR GAMES





# WHEN THE SKY IS A HOME TO LIFESTYLE AMENITIES

Life becomes a fairy tale as the gorgeous terrace amenities wraps you in an enchanting world of opulent amenities. What an extraordinary way to live!

- 

WALK WAY
- 

YOGA / AEROBICS LAWN
- 

SEATING COURT
- 

OUTDOOR GYM
- 

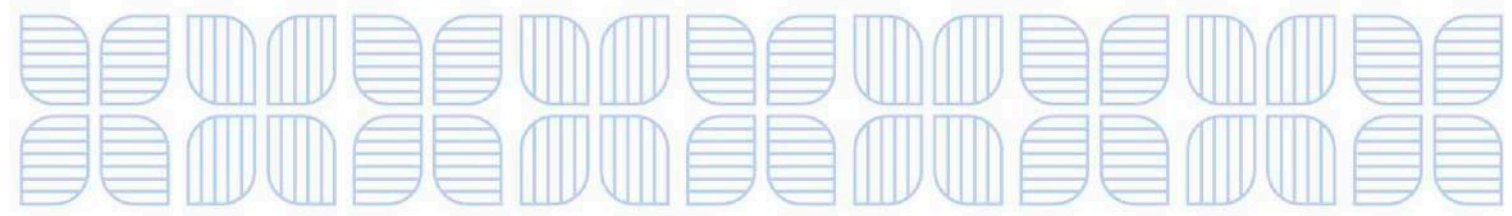
ACUPRESSURE PATHWAY
- 

SWIMMING POOL
- 

COMMUNITY GARDEN
- 

OPEN THEATRE
- 

POOL DECK



# RECREATIONAL FLOOR PLAN



- LEGEND**
- 01 LOBBY
  - 02 JOGGING TRACK
  - 03 OXYGEN PARK
  - 04 SEATING
  - 05 HAMMOCK SEATING
  - 06 YOGA DECK
  - 07 INDOOR GYM
  - 08 PANTRY
  - 09 MULTIPURPOSE HALL
  - 10 WASHROOM
  - 11 INDOOR GAMES
  - 12 OUTDOOR GAMES

# TERRACE FLOOR PLAN



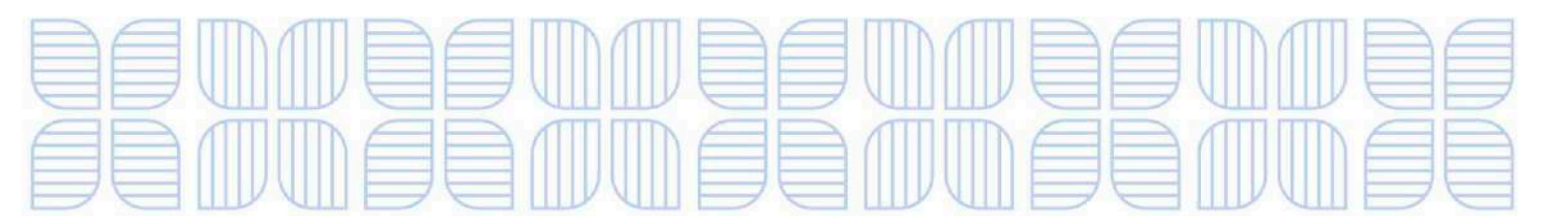
- LEGEND**
- 01 LOBBY
  - 02 WALK WAY
  - 03 YOGA / AEROBICS LAWN
  - 04 OUTDOOR GYM
  - 05 COMMUNITY GARDEN
  - 06 OPEN THEATRE
  - 07 SEATING COURT
  - 08 ACUPRESSURE PATHWAY
  - 09 SWIMMING POOL
  - 10 POOL DECK
  - 11 CHANGING ROOM
  - 12 TOILET



WHERE EACH  
ELEMENT OOZES

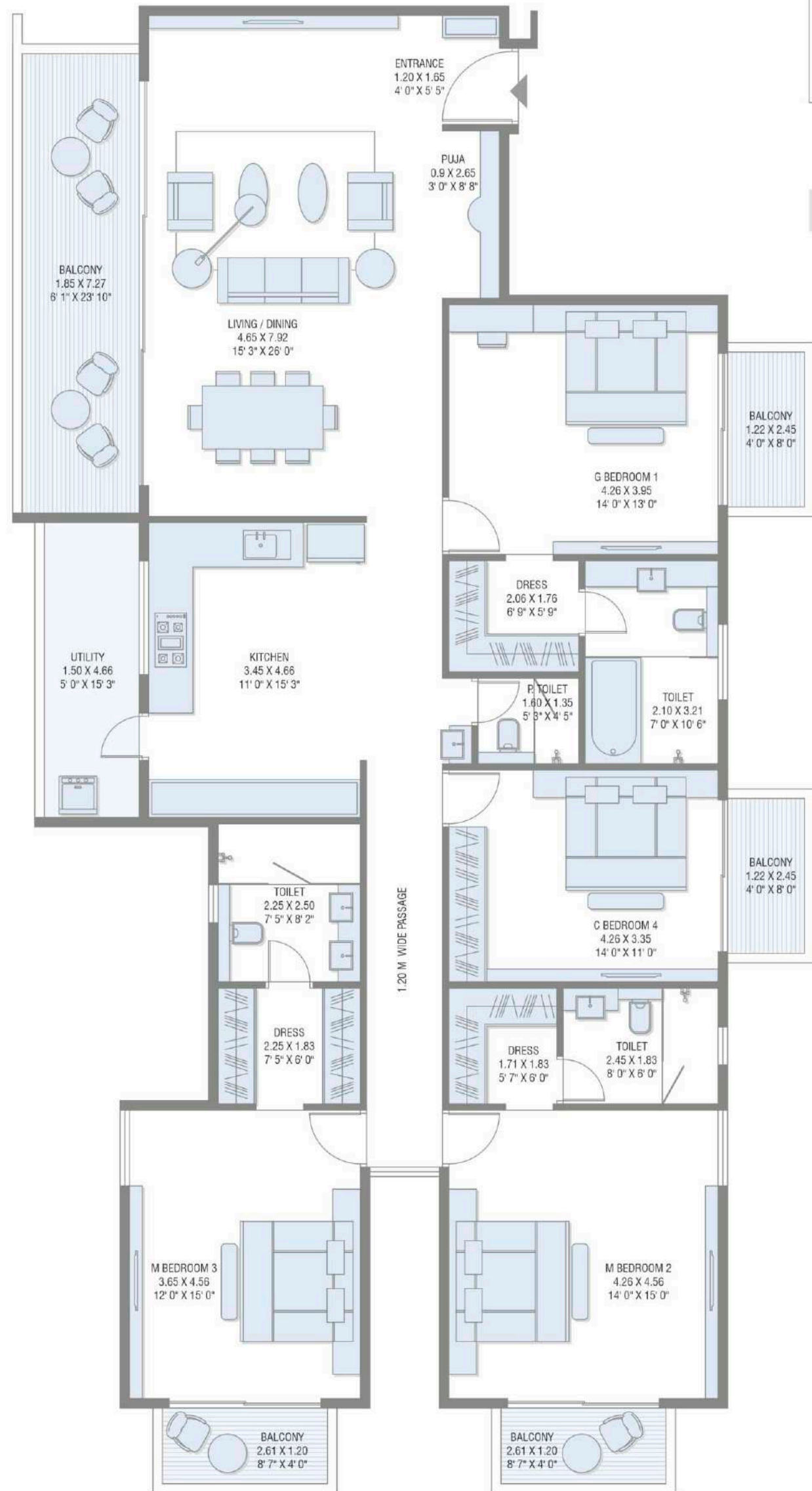
## UNMATCHED ELEGANCE

A magnificent reception area receives you and your guests with utmost grace and imperialness; giving them a glimpse of opulence they can expect ahead.

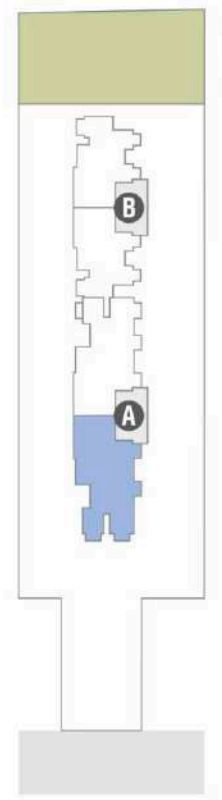


**4 BHK** | UNIT PLAN

TOWER - A

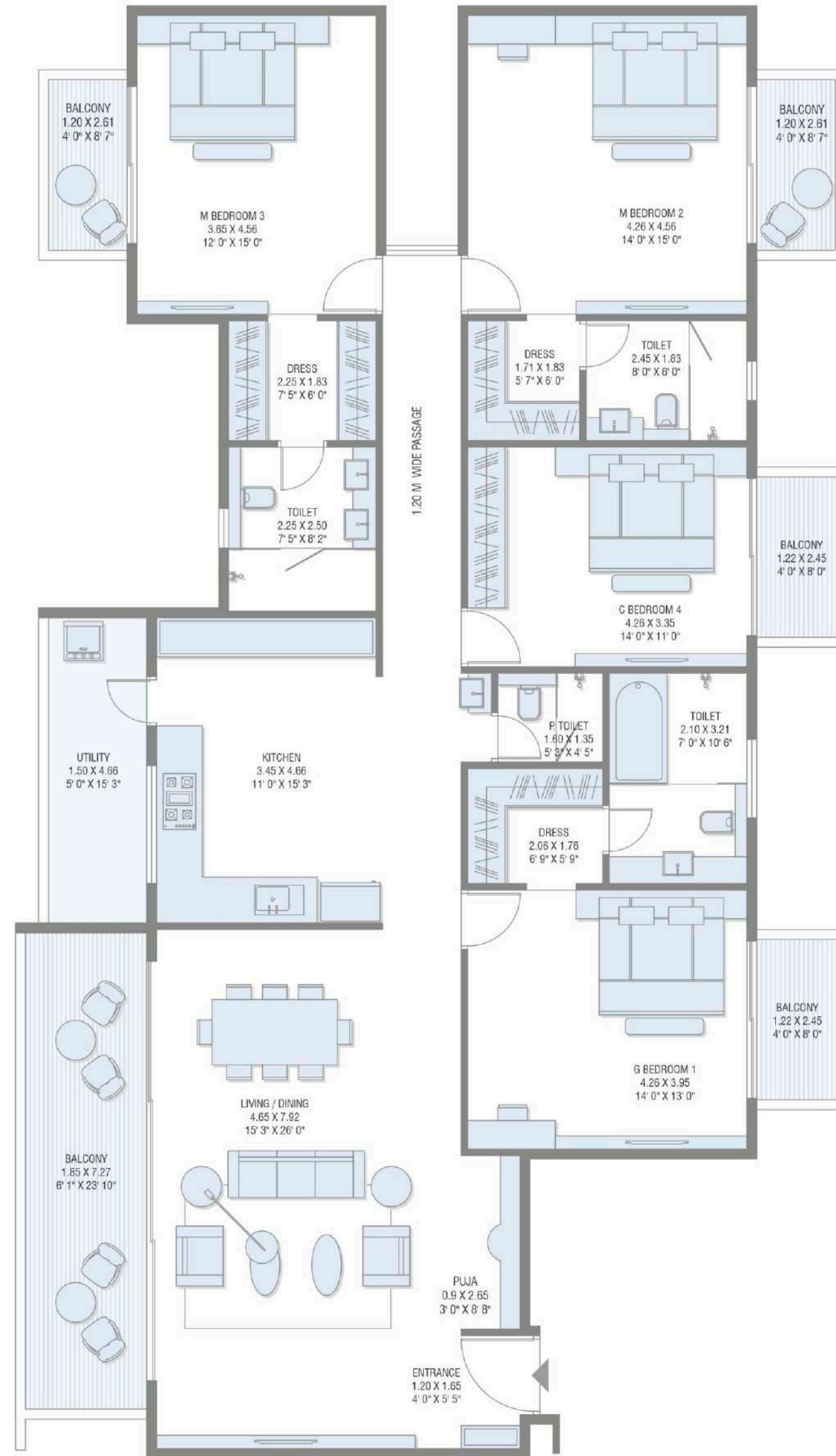


TYPE - 1

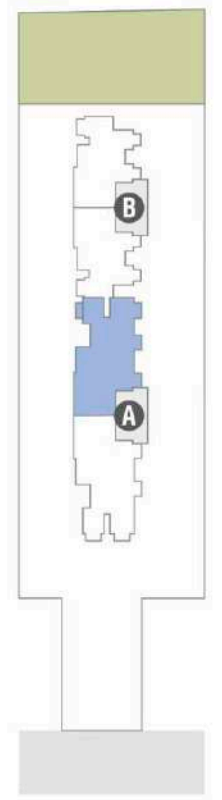


**4 BHK** | UNIT PLAN

TOWER - A

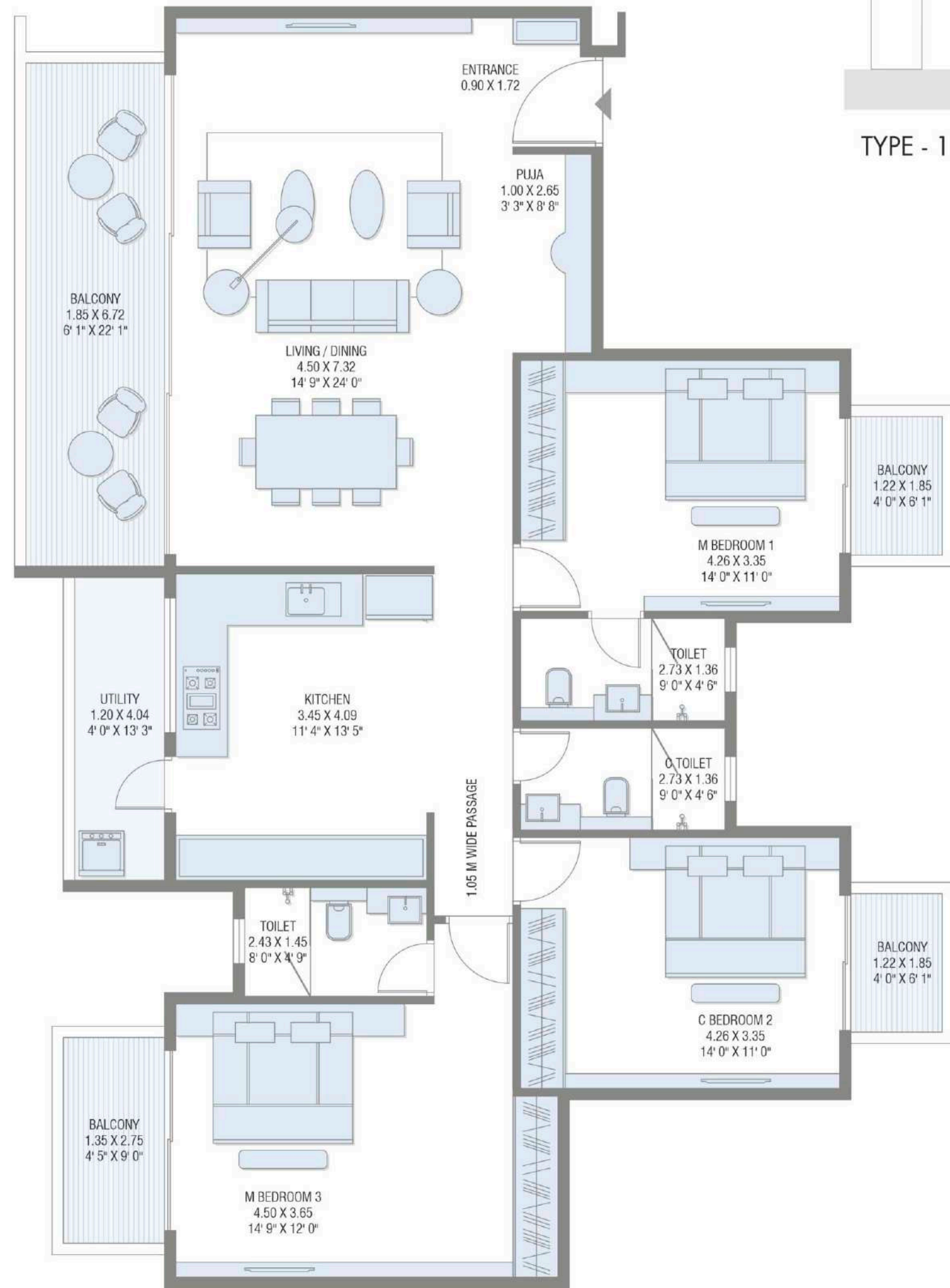


TYPE - 2



# 3 BHK | UNIT PLAN

TOWER - B

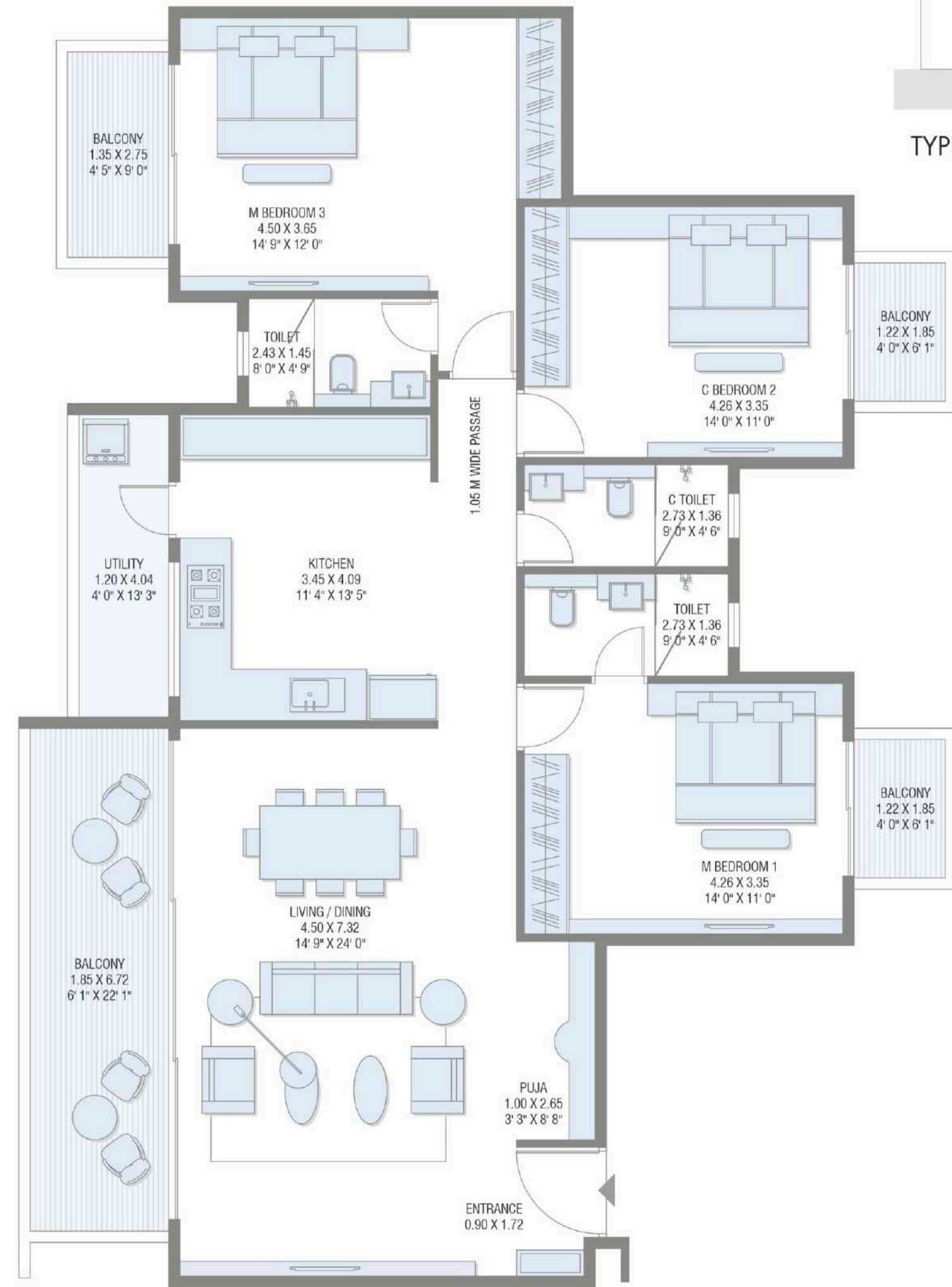


TYPE - 1



# 3 BHK | UNIT PLAN

TOWER - B

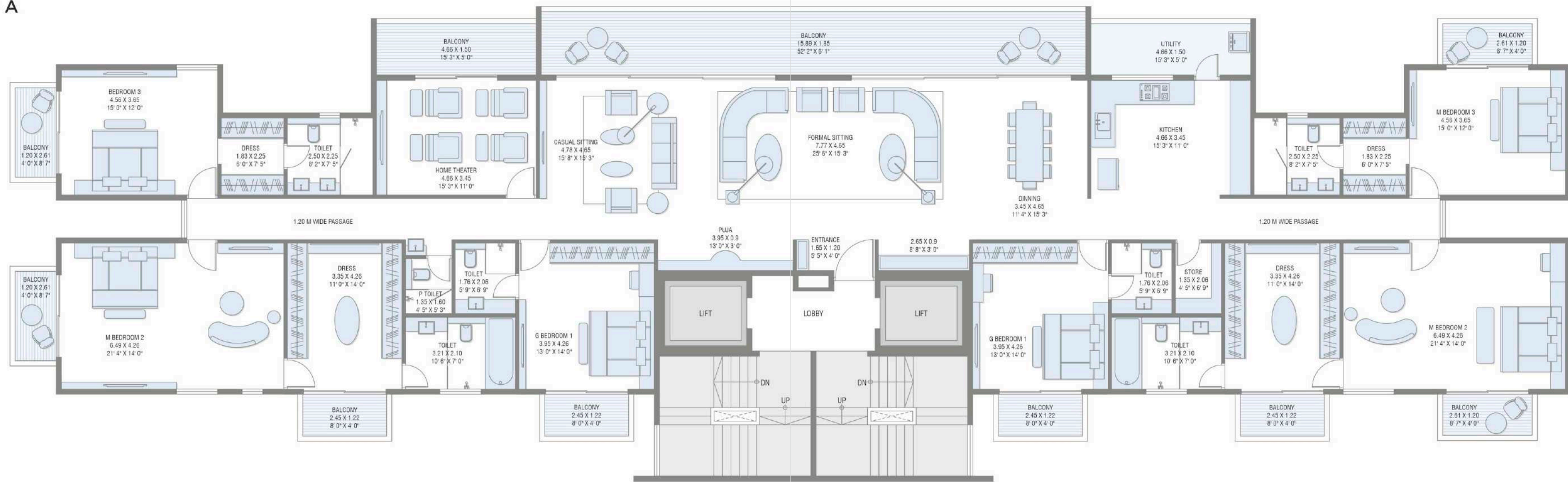


TYPE - 2



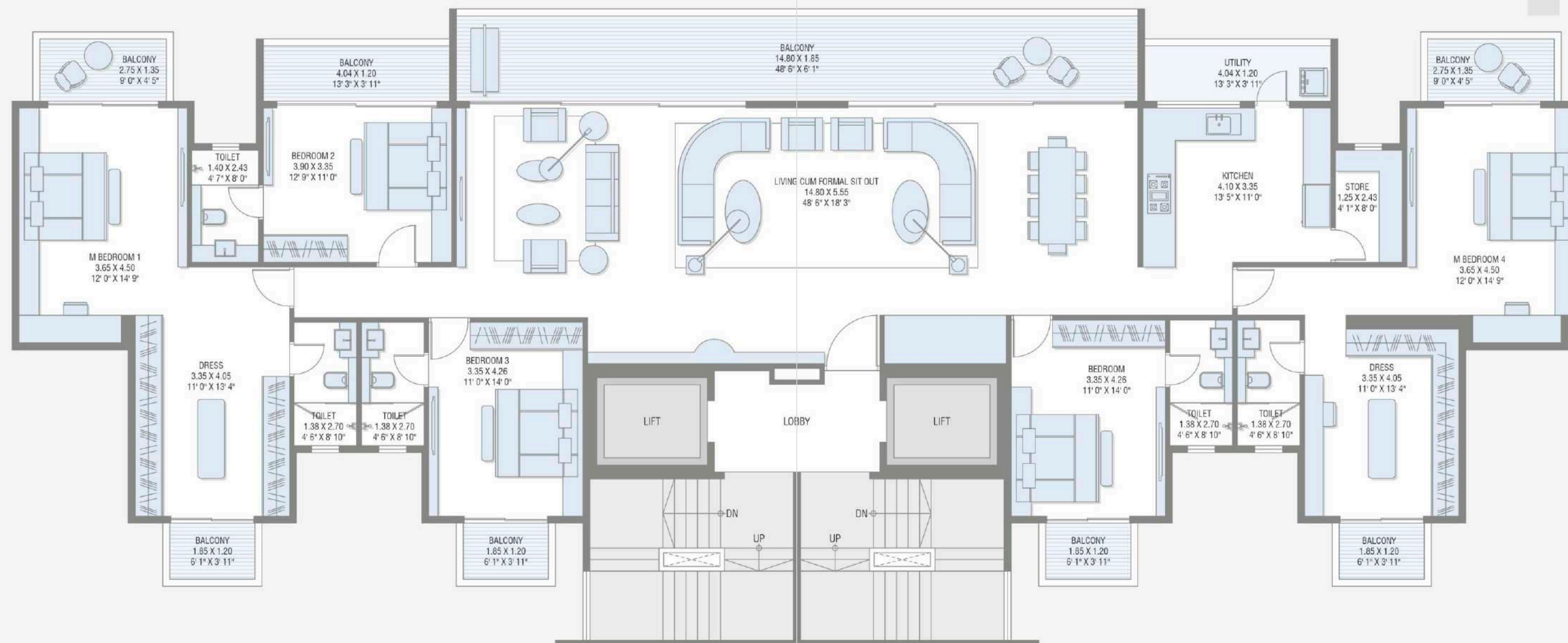
# 6 BHK | UNIT PLAN

## TOWER - A



# 5 BHK | UNIT PLAN

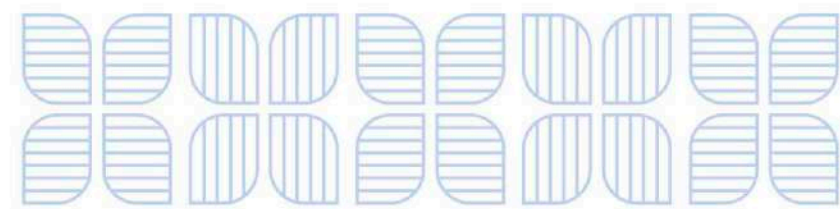
## TOWER - B





# LET THE FORTUNE SMILE, WHERE YOU RESIDE

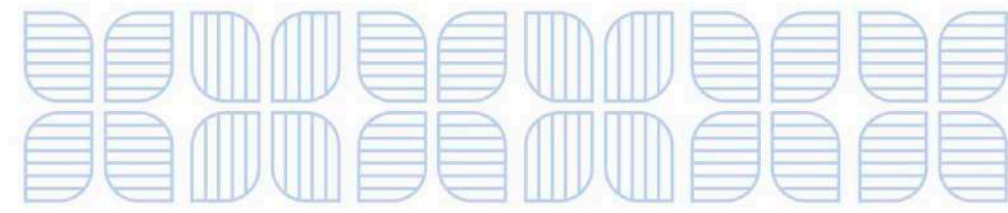
Move into a home that celebrates holistic living with its suave design, modern comforts and peaceful surroundings.



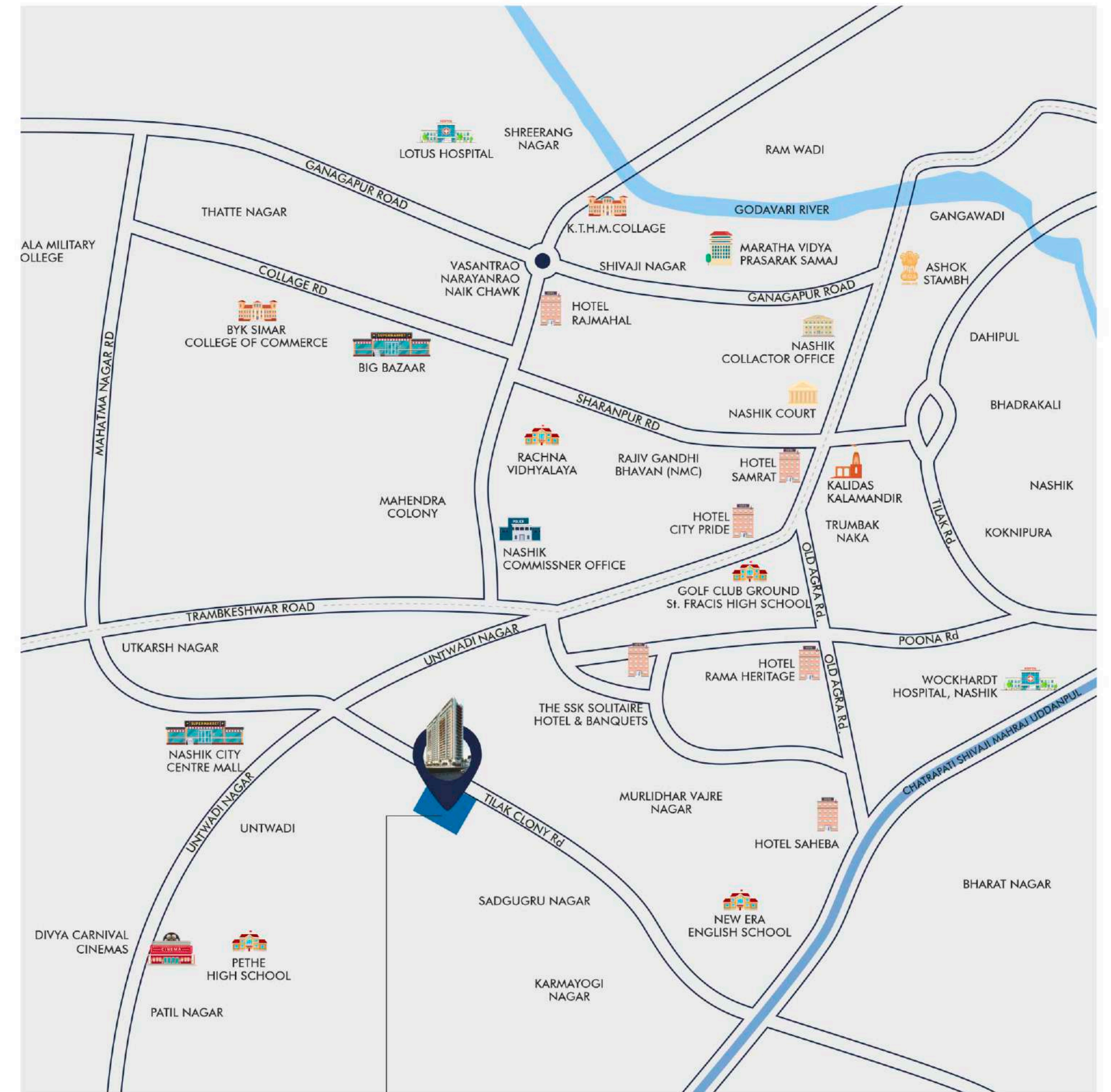
Floor Height:  
10'6" Ft Slab Height for Each Floor



## SPECIFICATIONS



	<b>RCC</b>	<ul style="list-style-type: none"> <li>RCC Earthquake Frame Structure Register</li> </ul>
	<b>Brick Work &amp; Plaster</b>	<ul style="list-style-type: none"> <li>AAC Block Work</li> <li>External Double Coat Sand faced Plaster</li> <li>Internal Smooth Finish Gypsum</li> </ul>
	<b>Flooring</b>	<ul style="list-style-type: none"> <li>Premium Vitrified tiles Flooring</li> </ul>
	<b>Door</b>	<ul style="list-style-type: none"> <li>Main Door - Decorative both Side veneer</li> <li>Laminated internal doors &amp; doors frame</li> </ul>
	<b>Windows</b>	<ul style="list-style-type: none"> <li>High quality UPVC/anodized aluminium windows</li> </ul>
	<b>Wash Area</b>	<ul style="list-style-type: none"> <li>Floor : Anti Skid or Rustic vitrified tiles</li> <li>Dado : Premium ceramic or vitrified tiles</li> <li>Provision for Washing machine</li> </ul>
	<b>Security</b>	<ul style="list-style-type: none"> <li>Video door phone security system to be linked with reception and access control in the lobby</li> <li>Entire campus covered under CCTV Surveillance</li> </ul>
	<b>Kitchen &amp; Store</b>	<ul style="list-style-type: none"> <li>Flooring : Vitrified tiles</li> <li>Platform : Natural granite / Composite Marble</li> <li>Dado : Premium ceramic tiles</li> </ul>
	<b>Balcony</b>	<ul style="list-style-type: none"> <li>Rustic tiles / Anti Skid tiles</li> </ul>
	<b>Electrification</b>	<ul style="list-style-type: none"> <li>3 Phase power connection</li> <li>Concealed ISI copper wiring with moduler switches</li> <li>MCB Distribution panel</li> </ul>
	<b>Railings</b>	<ul style="list-style-type: none"> <li>MS / Aluminum / Toughened glass railing</li> </ul>
	<b>Paint</b>	<ul style="list-style-type: none"> <li>Inside : Putty finish with Emaltion Paint</li> <li>Outside : Acrylic paint</li> </ul>
	<b>Toilets</b>	<ul style="list-style-type: none"> <li>Premium ceramic tiles upto lintel level</li> <li>Granite / Composite marble counter basin</li> <li>EWC-wall hung type-hindware, Kohler, Toto / equivalent</li> <li>CP Brass fitting-Jaquar Artize, Kohler, Grohe/ equivalent</li> </ul>



## URBANIA

NEX GEN LIVIN' EXPERIENCE

Site Address: Tidke Colony Rd,  
Lavate Nager, Parijat Nagar, Nashik,  
Maharashtra 422005

Booking Contact:

### ENJOY THE EASE OF CONNECTIVITY

	MUMBAI NAKA 5 MINUTES
	NASHIK STATION 20 MINUTES
	ABB CIRCLE 20 MINUTES

### EXPERIENCE THE PLEASURE OF SIMPLE CONVENIENCE

	CITY CENTRE MALL 5 MINUTES
	FRAVASHI ACADEMY 16 MINUTES
	WOCKHARDT HOSPITAL 10 MINUTES

JV Venture of  
**AVENUE & FORTUNE**